



TAOS WAYFINDING PLAN

WINTER 2023

TAOS WAYFINDING PLAN

WINTER 2023



COMPILED BY TAOS MAINSTREET

taosmainstreet.com

573.305.3905

PO BOX 3636 · Taos, NM 87571

*with New Mexico Mainstreet
technical assistance from*

groundworkstudio

groundworkstudio.com

6501 Americas Parkway NE, Suite 350
Albuquerque, NM 87110

lm.

leighton-moon.com

Alamogordo, NM 88310

Contents

1. INTRODUCTION

- About Wayfinding
- Wayfinding Sign Types

2. PROJECT BACKGROUND

- History & Context
- Project Team
- Project Sequence
- Plan Area

3. PROCESS

- Destinations
- Existing Sign Inventory
- Proposed Signs - Type, Design, Location

4. IMPLEMENTATION

- Phase 1:** Main/Priority Signs
- Phase 2:** Monument Signs
- Phase 3:** Narrative Signs
- Phase 4:** Exploratory Wayfinding

5. APPENDIX

1. INTRODUCTION



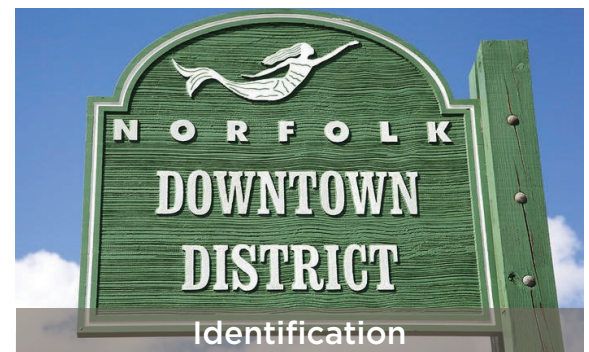
Informational



Directional



Regulatory



Identification

About Wayfinding

Wayfinding helps people get from one place to another. It includes signs that are easy to read for vehicles and pedestrians. The signs are customized to a community to celebrate local identity. It is more than just signs though - wayfinding encourages exploration subtly through design. A successful wayfinding system makes connections between key destinations, encourages walking and biking, and is simple, predictable, and inclusive.

Wayfinding Sign Types

There are four main types of wayfinding signage:

Informational — gives you general info on navigation and locations

(Example: Downtown map, Public Restrooms)

Directional — helps you get where you're going and make a choice at a junction

(Example: Library to the left, Park to the right)

Regulatory — used to tell you the rules and safety standards

(Example: One Way, Pedestrians Only)

Identification — lets you know you have arrived at your destination, serves as landmark

(Example: Historic Taos Plaza, Kit Carson Road)

We also propose to use exploratory wayfinding. These aren't traditional signs but instead tools that encourages exploration around an area. Examples may include painted arrows on the ground, murals or other public art, and lighting.

2. PROJECT BACKGROUND



History & Context

A wayfinding plan for downtown Taos came about from Taos MainStreet’s Walkability Initiative and interest from the downtown Taos business community who expressed that they notice visitors have a difficult time navigating around downtown. For more information about the Walkability Initiative, please visit bit.ly/taosalleynetwork.

This plan provides a vision and strategy for replacing existing vehicular and pedestrian signage in downtown Taos.



Wayfinding project team verifying existing signs.

Funding for this project comes from technical assistance through New Mexico MainStreet for the planning and design. Funding for Phase I implementation comes from Town of Taos Lodgers Tax.

Having a cohesive, consistent wayfinding approach will help connect visitors and locals with the resources of downtown Taos. Taos was built around the downtown plaza using the Law of the Indies layout to fan out from the center of town - this layout mixed with the more modern roadways can make downtown difficult for vehicles and pedestrians to navigate. With clear signage at the proposed locations, we hope that downtown Taos will be more navigable and friendly to all.

Project Team

This project is a team effort between local partners, planners, and graphic designers. In this document, “we” will refer to the project team, which is made up of:

- **Taos MainStreet:**
Charles Whitson & Juniper Leherissey
- **NM MainStreet - Groundwork Studio:**
Amy Bell, Claire Jordy, & Hollis Moore
- **NM MainStreet - Lm.:**
Cam Wilde & Julia Royal
- **Town of Taos:**
Karina Armijo

Project Sequence

This project began in September 2022 after Taos MainStreet requested technical assistance through New Mexico MainStreet (NMMS). Groundwork Studio and Leighton Moon were brought on through NMMS to assist with planning and graphic design of wayfinding signage.

The team met regularly on Zoom and with in-person site visits to develop a list and map of key downtown destinations, identify a route through downtown Taos, and inventory existing signs.

From there, a list of new signs was created to inform what designs would be needed and where. This plan documents this process and plan for implementation.

I. ASSESSMENT

Key Destinations
Route Identification
Existing Sign Inventory
Site Visits

II. DEVELOPMENT

Sign Locations & Types
Council Presentation
Sign Design

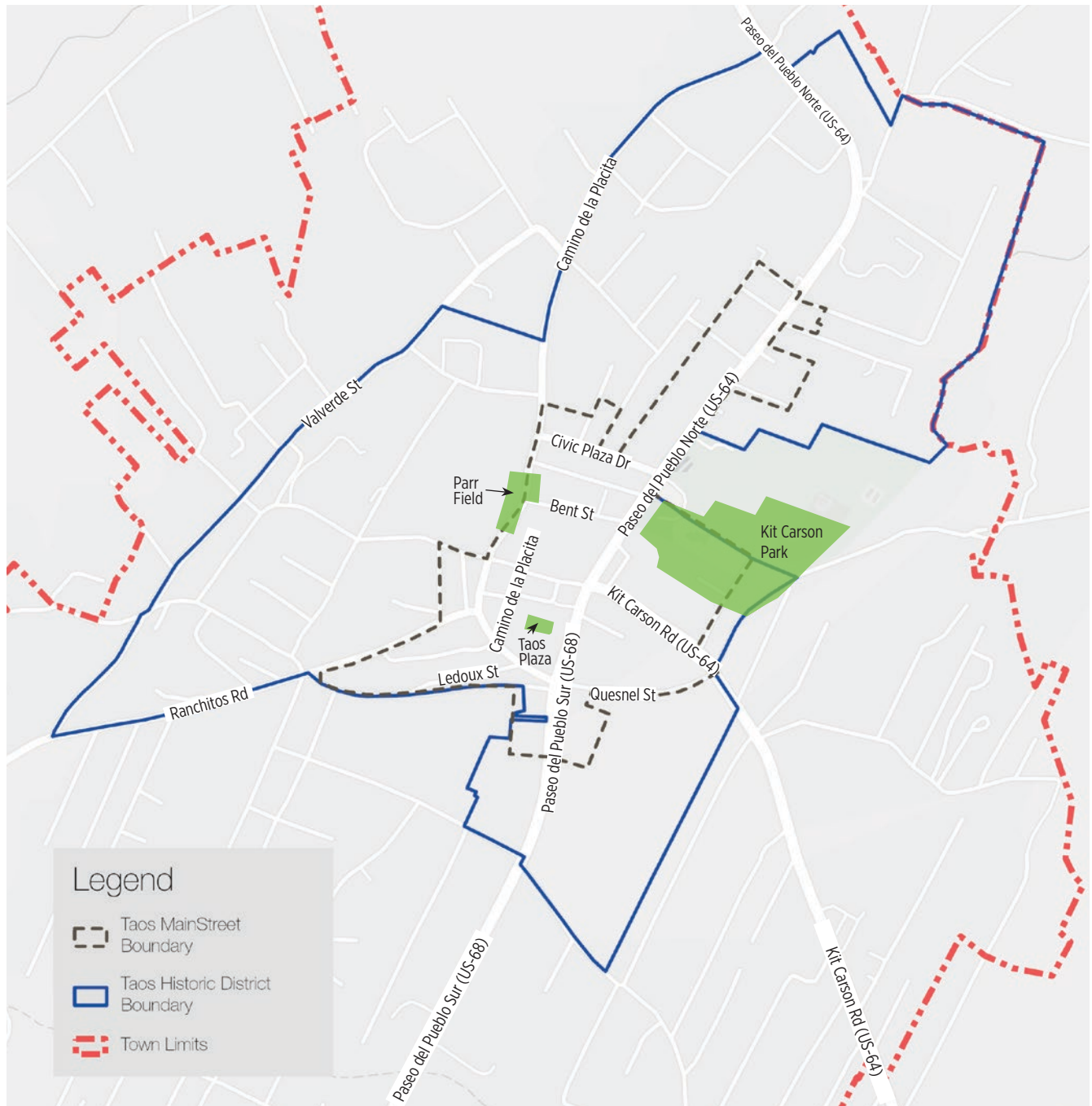
III. IMPLEMENTATION

Phase 1: Main/Primary
Phase 2: Monument
Phase 3: Narrative

Project Sequence Diagram

Plan Area

This wayfinding plan focuses on the designated Historic District which encompasses all of downtown Taos, as seen in the map below. Taos MainStreet's boundary falls within this district. The design and principles of wayfinding used here can be expanded further outside of these boundaries, if the Town or County chooses.



Taos Wayfinding Plan Area

3. PROCESS



Destinations

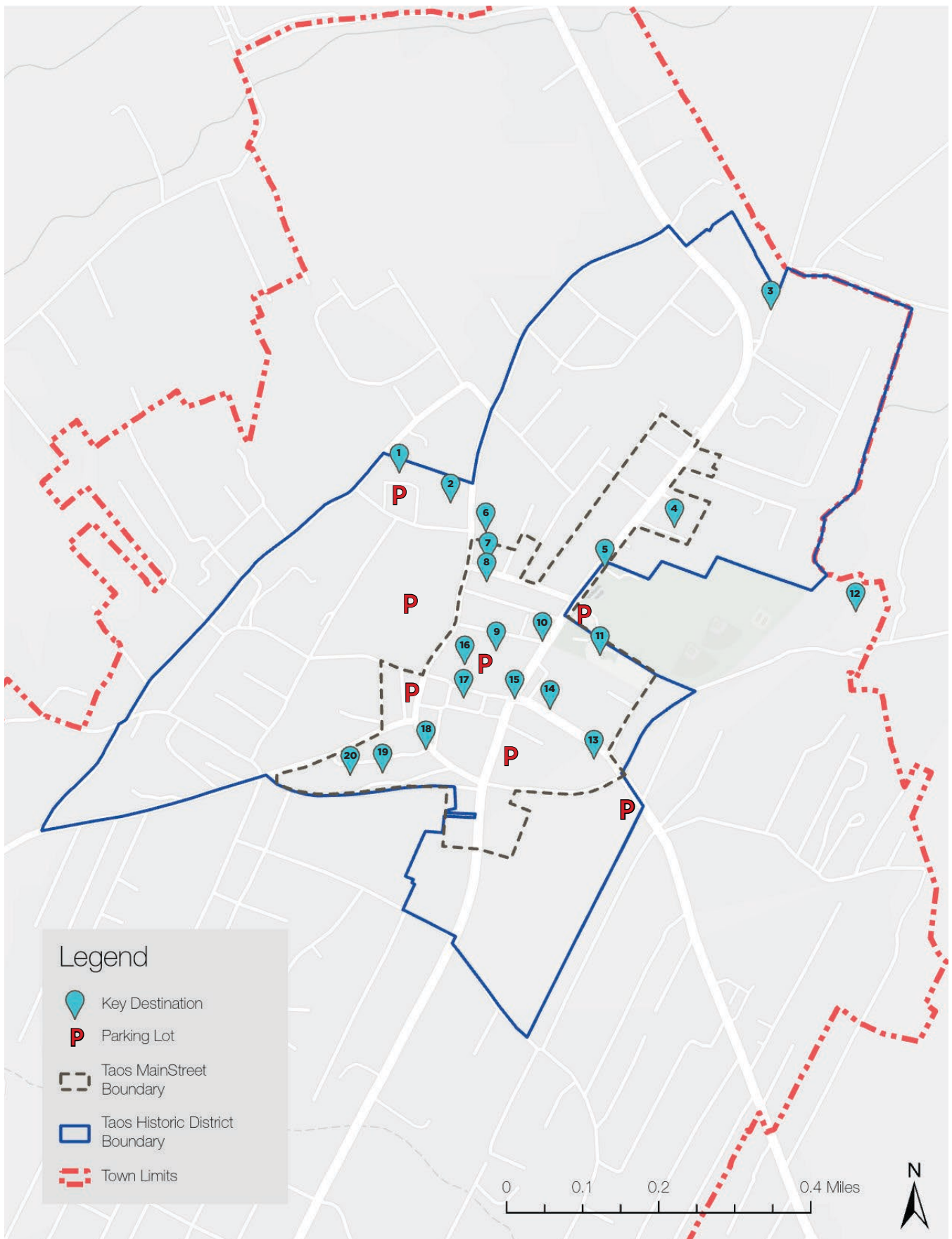
The project team selected key destinations in the plan area based on existing signs and discussion with the Town of Taos and UNM-Taos. Destinations were determined based on longevity and public use. There are 20 key destinations for downtown Taos, plus 7 town-owned parking lots.

Key Destinations:

1. Taos Public Library
2. Town Hall and Police Dept
3. Taos Pueblo
4. Taos Art Museum at Fechin House
5. Kit Carson Park
6. Fire Department
7. UNM-Taos
8. Municipal Court
9. John Dunn Shops
10. Bent St
11. Taos Center for the Arts
12. Mabel Dodge Luhan House
13. Couse-Sharp Historic Site & Lunder Research Center
14. Kit Carson House National Historic Landmark
15. Kit Carson Rd
16. Public Restrooms
17. Taos Plaza
18. Ledoux St
19. E.L. Blumenschein Home & Museum
20. Harwood Museum of Art

Town Parking Lots:

Guadalupe · Kit Carson · TCA · Dona Luz
Bent St · Taos Library · Des Georges



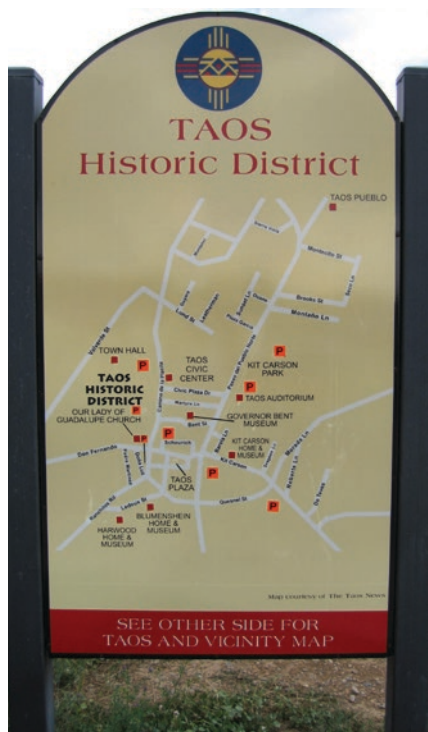
Downtown Taos Key Destinations

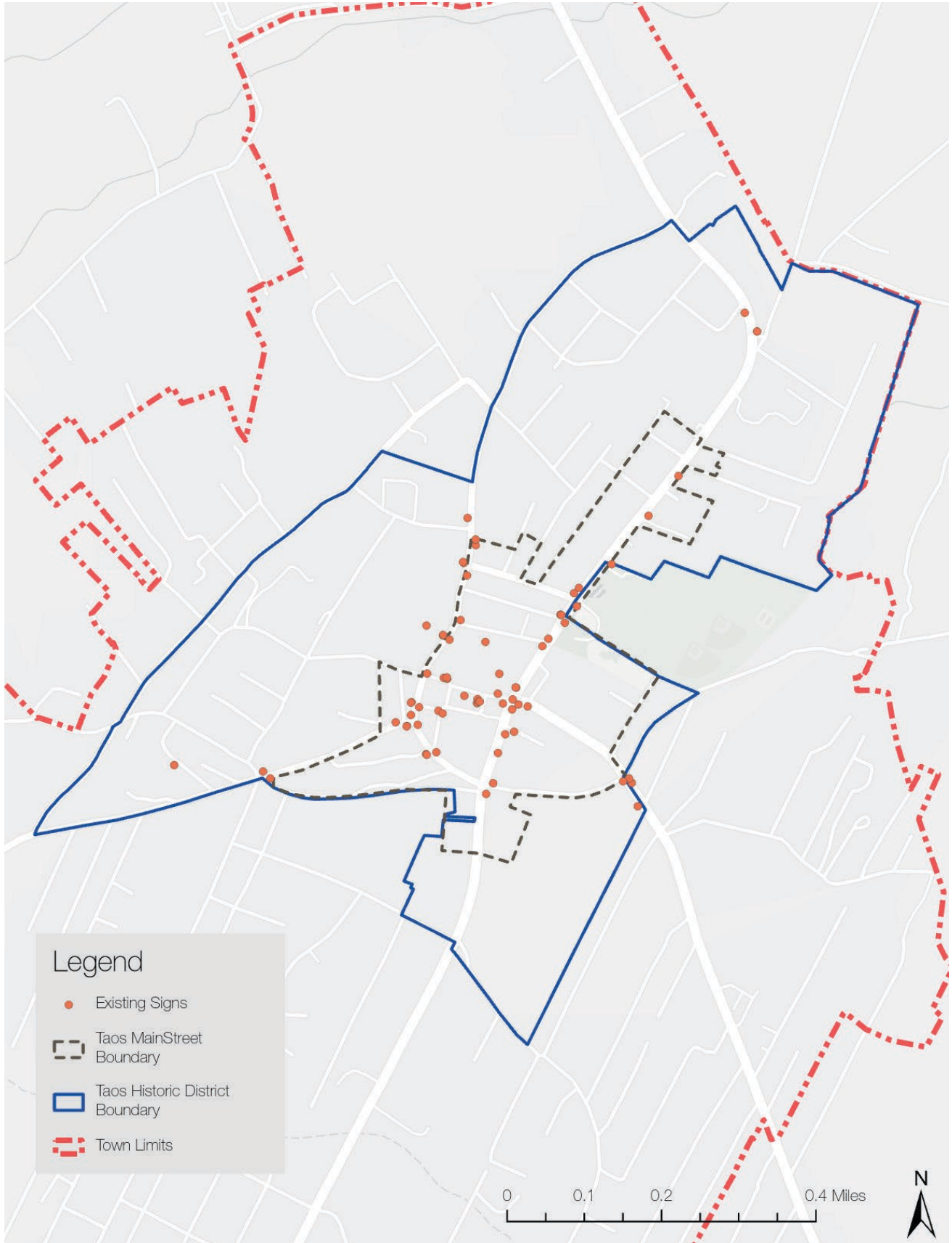
Existing Sign Inventory

After establishing the key destinations for Downtown Taos, we inventoried the existing signs through online mapping and in-person verification. The signs that were inventoried include directional signs, crosswalk signs, and narrative signs about downtown areas. We did not include business signs or other privately-owned signs. The majority of the existing signs were created by the Town of Taos

and NM Department of Transportation. There are a variety of styles represented by the existing signs, with one distinct style being the blue “Historic District” monument, directional, and street sign caps. We believe these were created years ago by the Town of Taos, but we do not have much background on the history.

Along with logging the location of each existing sign, we evaluated the content and effectiveness of the signs in directing vehicles and pedestrians around downtown.





Existing Signs in Downtown Taos

Existing Sign Challenges & Issues

The current sign and wayfinding landscape within the Taos Historic District presents several challenges and potential confusion for visitors and community members.

Downtown Taos offers unique challenges for directional wayfinding simply because of the existing path and street layouts and structure — which, of course, is impractical to change — and valiant attempts have been made in the past to thoughtfully identify areas of interest and navigation (for both pedestrians and drivers). However, the lack of consistent sign styles, the age of the existing signs,

sign legibility problems and the lack of a unified system as unique as the town of Taos itself should be addressed and improved through a thoughtful and customized system as a whole.

“... well-designed signage and environmental graphic programs not only fulfill their communication function of informing, directing, and identifying but also serve to enhance the aesthetic and psychological qualities of an environment.”

— Chris Calori, *Signage and Wayfinding Design*



Lack of Consistency

The predictability/consistency of wayfinding is crucial. Recognizable and easily understood information is created by consistency, which should extend to all aspects of wayfinding design (sign materials, dimensions, colors, etc.) Consistent and predictable sign design boosts users' confidence when navigating the area.

Overall Navigation and Connectivity Issues

An effective wayfinding system should directly connect to places locals and visitors want to go as well as enable them to discover new destinations, parking, and geographically-separated mini-(shopping) districts. The current signage and navigation aids are confusing to visitors and disconnected.



Legibility Problems

Legible typography is essential for both clear communication and stylistic longevity. Additionally, the light reflectivity of many of the current signs hinders clear communication, especially at night and in poor weather conditions.



No Distinctive Placemaking

Many of the current identification and monument signs feature stylized renderings of Taos Pueblo, rather than imagery or symbols representing the Historic Downtown Taos district itself. This can potentially cause significant confusion to visitors and misses out on the opportunity to symbolically represent downtown Taos.



Aged/Damaged Signs

The age and overall wear of many current signs is certainly showing. Many of the existing signs are damaged enough to affect legibility at night and some are beginning to separate from their frames causing unsafe conditions for pedestrians and in some case, vehicles (risk of a sign falling).

Visual Brand/Style Design

In order to achieve the goals of sign and navigation consistency, predictability, unity, and visual cohesiveness, extensive research into a distinctive design style and language was needed. A new wayfinding system will not only improve local and visitor predictable navigation, but is also an opportunity for Taos to showcase imagery and symbolism that represent elements that are *uniquely Taos*.

Design Background & History

Outside of practical communication considerations (typography styles, size, sign reflectivity, etc.), inspiration for supporting design elements were found in historical patterns and shapes that are, again, unique to Taos.

Jose Manuel Lorenzo Valdez’s chip carved patterns and designs — which appear to borrow motifs from Pueblo textiles and pottery, are unique to Taos simply because the designs are unlike others that were originating out of Spain and Mexico.

The second primary source of inspiration were the distinctively Taos corbel design seen on architecture throughout the village, primarily the corbel design found within Luna Chapel.



Harinero (detail), c. 1785, Jose Manuel Lorenzo Valdez



Taos-style corbel design



The team taking a tour of the Couse-Sharp Historic site for visual inspiration



Vigas and latillas in the ceiling of San Francisco de Asis Mission Church, Ranchos de Taos, New Mexico



Harinero (detail), c. 1785, Jose Manuel Lorenzo Valdez

Sign Design

The wayfinding signs design is derived directly from the research and visual background that is *uniquely Taos*. A historic district graphic, inspired by Valdez’s carved patterns, takes center stage as the primary iconography.

This graphic is modular and is broken down into several supporting graphics that are used to signify major “mini districts,” such as Bent Street, Ledoux, and the historic Plaza. The Taos-style corbel also makes an appearance as a supporting framing element in the designs.



Monumen · Primary Arrival



Monument · “Mini District”



Monument · “Mini District”

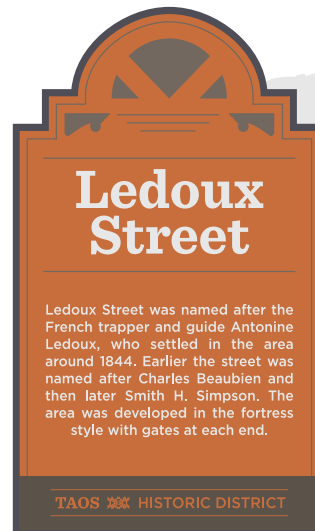


Monument · “Mini District”



The sign designs prioritize legibility, readability, and consistency through typeface choice coupled with high contrast and non-distracting color ways. Like most highway signage (and unlike the current wayfinding signage), the information will be reflective against

a matte/flat background, which will greatly aid in readability at night and in inclement weather.



Decision & Confirmation

Decision

Monument · Narrative, Type 2




Decision



Sign Cap

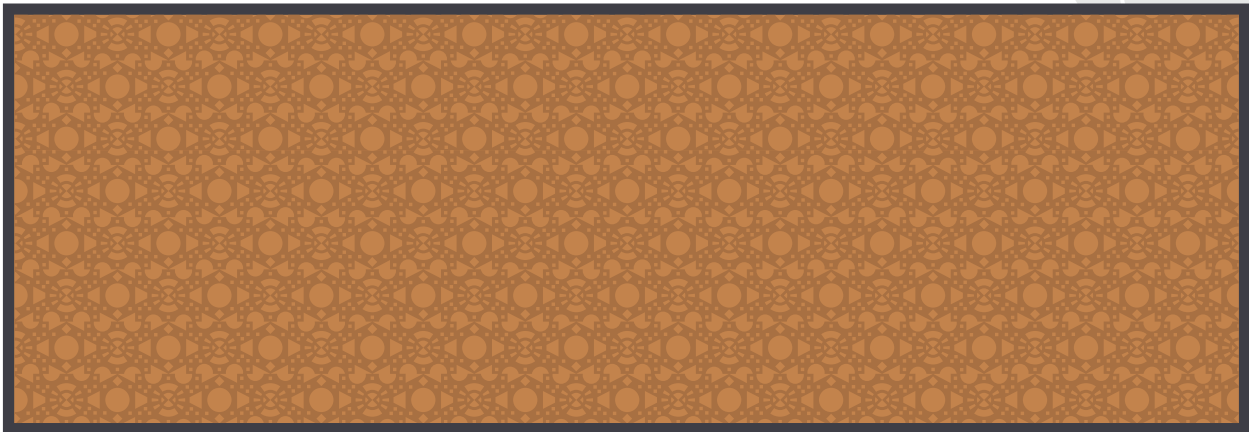
Public Parking Confirmation



Don Fernando de Taos

The Town of Taos was originally established on May 1, 1796 when 63 families who had petitioned Governor Don Fernando Chacón were placed in possession of the Don Fernando de Taos land grant by the Alcalde of the Pueblo of Taos, Antonio José Ortiz. The Town has existed as a village under the Spanish crown, then Mexico, and later when New Mexico became a Territory of the United States in 1846. On May 7, 1934 Taos was incorporated as a municipality under New Mexico State law.

TAOS HISTORIC DISTRICT



Narrative · Plaza Inlay, Front & Back

Gateway Signage Designs

Gateway signage is used to visually welcome residents and visitors alike to a destination. Both design options for the Taos Historic District gateway sign introduce the visual language patrons will experience once they enter the district.

The Taos-style corbel is built into the sign structure (in three dimensions) to introduce the welcoming and familiar design element.

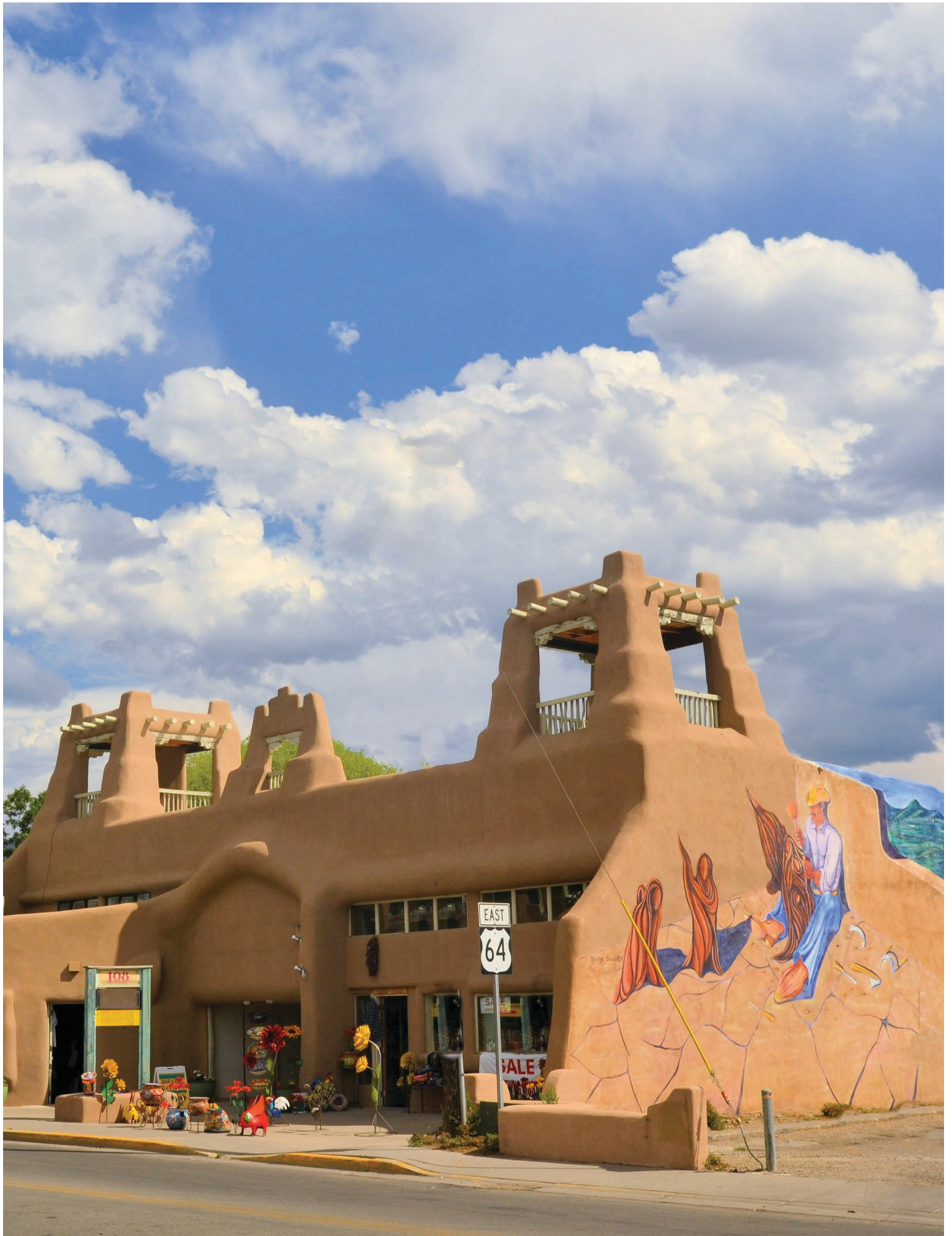
The back of the signs feature the repeated custom pattern made from the historic district graphic.



Gateway Signage Option · Front & Back

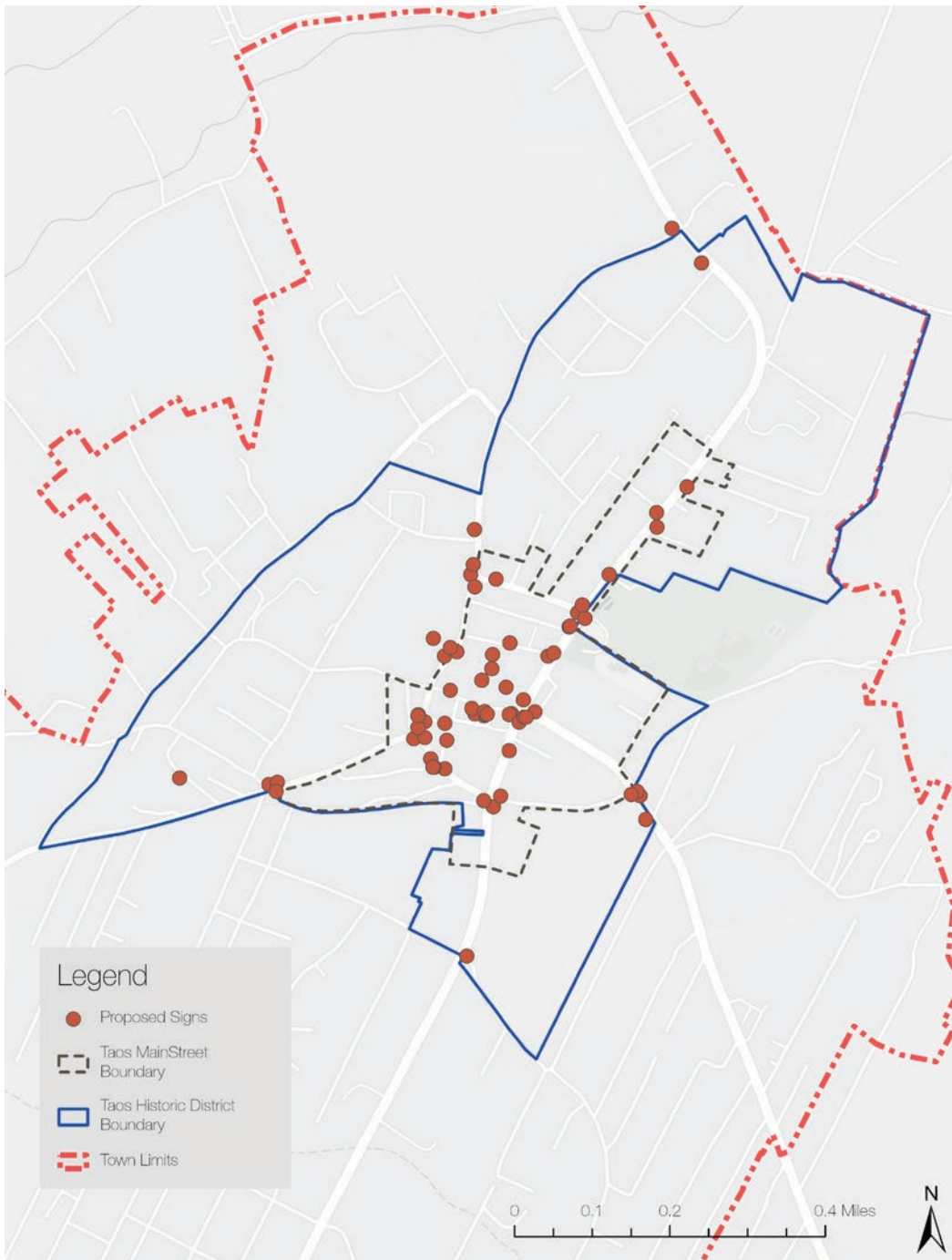


Gateway Signage Option · Front & Back



Proposed Sign Locations

Through deliberation and discussions, we propose 69 improved wayfinding signs. This includes all the proposed sign types listed. The majority of these signs are replacements of existing signs, with updated design and destinations. A complete list and summary of these signs can be found in this document's Appendix.



Proposed Signs in Downtown Taos

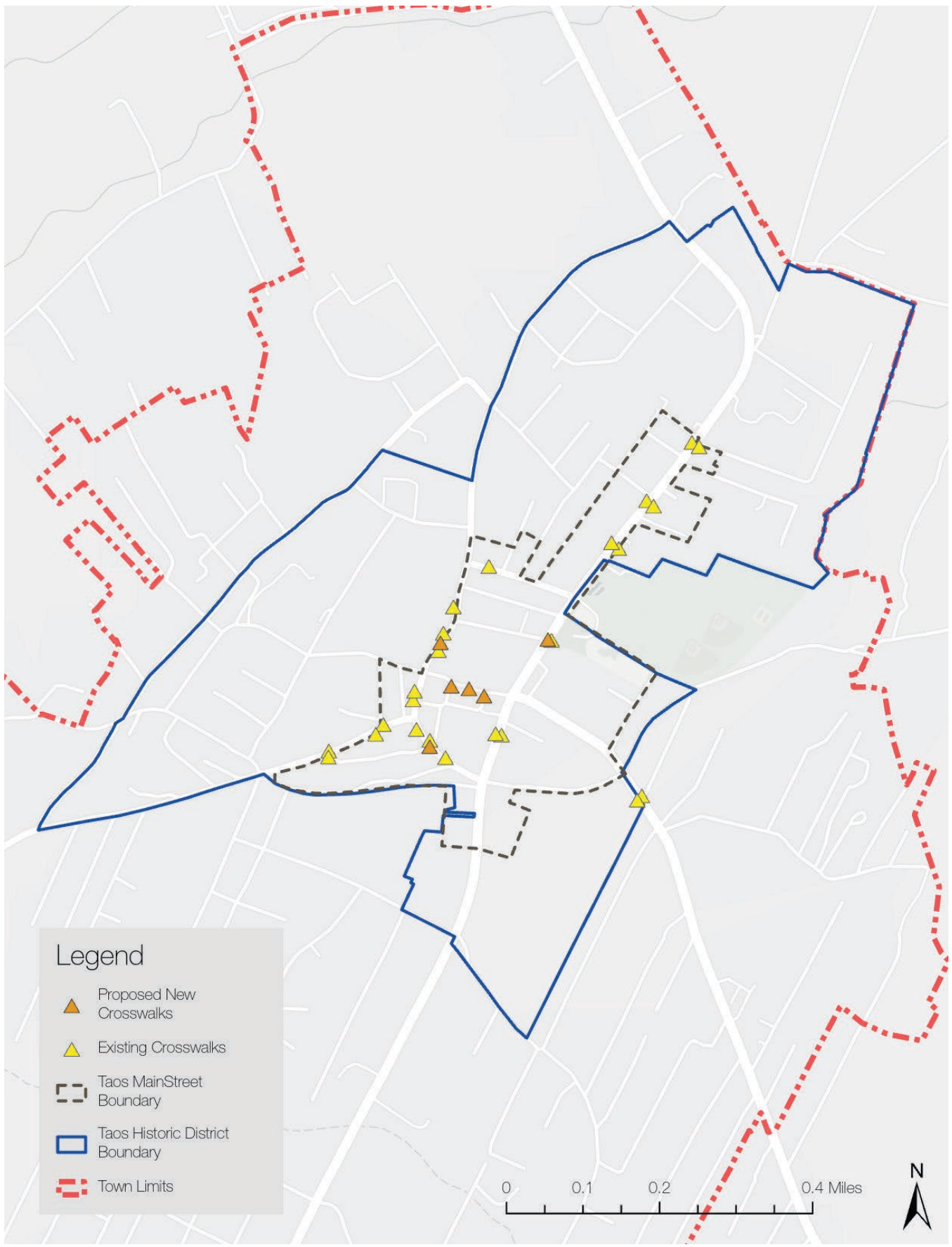
Crosswalks and Pedestrian Safety

We additionally evaluated crosswalks and related signage in Downtown Taos. We initially cataloged these signs as potential posts to use for installing new signs but then realized part of the wayfinding conversation is about pedestrian safety while directing people around downtown. There are areas that could use improved pedestrian crossing signage, as a phase of this project or another project. The following map shows the existing and proposed crosswalk signage. One of the existing crosswalks and signage is recommended for removal, shown on the map with a strike through the yellow symbol. This is at Camino de la Placita, crossing from Dona Luz parking lot to the Plaza. We feel this crosswalk is redundant because there is another crosswalk not even 60 feet from this one. This crosswalk leads pedestrians onto a narrow crumbling sidewalk, right up against the back of a building. The

other crosswalk, just south of this, leads pedestrians into the Plaza itself, so it is more useful. The double crosswalks also confuses vehicles.

There are a variety of types of crosswalks and signage that may be considered for the proposed crosswalks. Striping patterns can vary, with parallel lines, zebra striping, ladder striping, diagonal striping, and more. For crosswalk signage, there are signs such as the signs on each side of the street, a sign in the middle of the road, Rectangular Rapid-Flashing Beacon (RRFB), and Pedestrian Hybrid Beacons (PHB) also called HAWK signals.





Existing and Proposed Crosswalks in Downtown Taos

4. IMPLEMENTATION





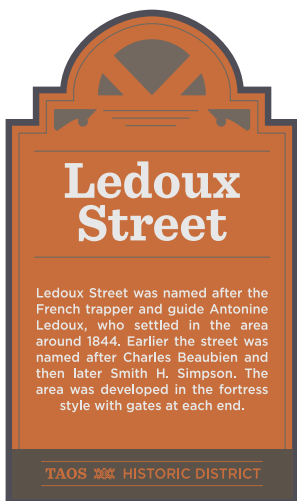
Phase 1: Main/Priority Signs

The first phase for installation will include the downtown directional and decision signs. This phase includes the bulk of the proposed signage in this plan. These **reflective metal** signs are simple to install and therefore have a lower cost of production than some of the other signs.



Phase 2: Monument Signs

Phase two will install monument and gateway signs when more funding is available. The gateway signs are the largest design, welcoming visitors to downtown Taos at the four cardinal entrances. Monument signs are the second largest design and designate mini-districts within downtown such as Ledoux St, Bent St, etc. These are seen as special destination signs that tell visitors they are in a specific commercial district without having to call out each business in that area. The larger signs incorporate more materials, resulting in a more expensive and involved production and installation process.



Phase 3: Narrative Signs

Phase 3 will include the installation of narrative signs. These will take longer to develop since community input will be needed to re-craft the narratives. Historical and storytelling experts in the community will be consulted for these. Narrative sign design proposals have been included as part of this plan, however, the finalized story/narrative for each sign will be rewritten as needed during this phase.

Phase 4: Exploratory Wayfinding

Exploratory wayfinding, also called *intuitive wayfinding*, is more creative and flexible than the other types of wayfinding we're proposing. This plan shows examples of what exploratory wayfinding might look like. General guidelines will be developed during this phase to This phase can be installed at various times and locations, matching the style and type to the needs and gaps not addressed with traditional signage.



5. APPENDICES



Sign Plan Summary

- 71 existing signs downtown will be consolidated into 66 newly designed signs which include:
 - » 3 confirmation signs
 - » 26 decision signs
 - » 8 turn signs
 - » 3 fingerboard signs
 - » 4 gateway signs
 - » 7 maps
 - » 4 monument signs
 - » 11 narrative signs (+ more if Historical Society decides)
- 30 of these signs are new and do not currently exist in that location, and 36 signs will be replacing existing signs.
- If the town wishes to add toppers to all street signs, there are 77 street signs in the downtown historic district, 37 of which already have Historic Taos toppers.

| No. | Sign Type | Content | Driving Direction | Location Specifics | Notes |
|-----|-------------------|--|----------------------------------|---|-----------------------|
| 1 | Decision Sign | Right: Town Hall Public Library Parking Straight: Downtown Taos | Southbound Paseo Norte | NW corner of Paseo Norte and Camino de la Placita | New sign |
| 2 | Gateway Sign | Taos Historic District | Southbound Paseo Norte | SW corner of Paseo Norte and Theodora St | New sign |
| 3 | Confirmation Sign | Straight: Taos Pueblo Taos Ski Valley | Northbound Paseo Norte | SE corner of Paseo Norte and Montano Ln | Replace existing sign |
| 4 | Map | | Southbound Paseo Norte | SW corner of Paseo Norte and Plaza Garcia | New sign |
| 5 | Turn Sign | Taos Art Museum at Fechin House | Two-sided, east side Paseo Norte | SE corner of Paseo Norte and Taos Art Museum entrance | Replace existing sign |
| 6 | Turn Sign | Kit Carson Park | Two-sided, west side Paseo Norte | SW corner of Paseo Norte and Kit Carson Park entrance | New sign |
| 7 | Decision Sign | Right: Municipal Buildings Parking Left: Parking Straight: Taos Plaza Parking | Southbound Paseo Norte | NW corner of Paseo Norte and Civic Plaza Dr | Replace existing sign |
| 8 | Decision Sign | Right: Taos Plaza Parking Left: Kit Carson Park Taos Art Museum Straight: Parking | Eastbound Civic Plaza Dr | SW corner of Paseo Norte and Civic Plaza Dr | New sign |

| No. | Sign Type & Direction | Content Options | Driving Direction | Location Specifics | Notes |
|-----|-----------------------|--|--|---|--|
| 9 | Decision Sign | Right: Parking Left: Municipal Buildings Parking Straight: Kit Carson Park Taos Art Museum | Northbound Paseo Norte | SE corner of Paseo Norte and Civic Plaza Dr | Replace existing sign |
| 10 | Decision Sign | Straight: More shopping | Northbound Paseo Norte | Left side of street, in front of Martyrs | Replace small red sign |
| 11 | Narrative | TBD | Southbound Paseo Norte | NW corner of Paseo Norte and Martyr's Ln | Replace existing sign |
| 12 | Decision Sign | Left and right: More shopping and restaurants | Eastbound Bent St | On light pole at east end of Bent St, to signal pedestrians to go north or south on Paseo | New sign |
| 13 | Monument Sign | Bent Street: Shops, Restaurants, Galleries, Museum | Westbound Bent St | SW corner of Paseo Norte and Bent St | New sign |
| 14 | Narrative | TBD | Westbound Bent St | North side of Bent St, in courtyard across from John Dunn Shops | Replace existing sign - move to courtyard in front of Govt Bent Museum |
| 15 | Decision Sign | Right: Taos Plaza Left: Kit Carson House Couse-Sharp Historic Site Mable Dodge Luhan House Parking Straight: Museums: E.L. Blumenschein and Harwood Parking | Southbound Paseo Norte | NW corner of Paseo Norte and Kit Carson Rd - exact location will depend on construction | Replace existing sign |
| 16 | Monument Sign | Kit Carson Street: Shops, Galleries, Museum | Eastbound Kit Carson Rd | SE corner of Paseo and Kit Carson Rd - exact location will depend on construction | New sign |
| 17 | Narrative | TBD | Eastbound Kit Carson Rd | SE corner of Paseo Sur and Kit Carson Rd - exact location will depend on construction | Replace existing sign |
| 18 | Decision Sign | Straight: Taos Plaza Right: More shopping and restaurants Parking Left: More shopping and restaurants Parking | Westbound Kit Carson Rd | NE corner of Paseo Norte and Kit Carson Rd - exact location will depend on construction | New sign |
| 19 | Map | | Eastbound Kit Carson Rd | SE corner of Kit Carson Rd and Quesnel | Replace existing sign |
| 20 | Decision Sign | Right: Mable Dodge Luhan House Straight: Couse-Sharp Historic Site Kit Carson House Historic Downtown | Westbound Kit Carson Rd | NE corner of Kit Carson Rd and Morada Ln | Replace existing sign |
| 21 | Gateway Sign | Taos Historic District | Westbound Kit Carson Rd | NE corner of Kit Carson Rd and Morada Ln | New sign in existing frame |
| 22 | Turn Sign | Parking | Two-sided, south side of Kit Carson Rd | | Replace existing sign |

| No. | Sign Type & Direction | Content Options | Driving Direction | Location Specifics | Notes |
|-----|-----------------------|---|----------------------------------|---|-----------------------|
| 23 | Gateway Sign | Taos Historic District | Northbound Paseo Sur | NE corner of Paseo Sur and Los Pandos Rd | New sign |
| 24 | Narrative | TBD | Northbound Paseo Sur | NE corner of Paseo Sur and Quesnel Ln | Replace existing sign |
| 25 | Decision Sign | Left: Ledoux St Museums Martinez Hacienda Parking Straight: Historic Downtown Parking | Northbound Paseo Sur | SE corner of Paseo Sur and Quesnel | Replace existing sign |
| 26 | Decision Sign | Left: Historic Downtown | Eastbound Camino de la Placita | SW corner of Camino de la Placita and Paseo Sur | New sign |
| 27 | Turn Sign | Parking | Two-sided, east side Paseo Norte | SE corner of Paseo Norte and Des Georges Ln | Replace existing sign |
| 28 | Decision Sign | Left: Taos Plaza Right: Kit Carson House, Couse-Sharp Historic Site, Mabel Dodge Luhan House Straight: Bent St, John Dunn Shops | Northbound Paseo Norte | SE corner of Paseo Norte and Kit Carson Rd - exact location will depend on construction | Replace existing sign |
| 29 | Monument Sign | Plaza: Shops, Restaurants, Galleries | Westbound North Plaza | SW corner of Paseo and North Plaza | New sign |
| 30 | Decision Sign | Right: More shops and restaurants Left: More shops and restaurants Straight: Kit Carson House Couse-Sharp Historic Site Mable Dodge Luhan House Parking | Eastbound North Plaza | SW corner of Paseo Norte and Kit Carson Rd - exact location will depend on construction | New sign |
| 31 | Narrative | Remove? TBD | Center of Taos Plaza | NE corner of Plaza Center | Replace existing sign |
| 32 | Narrative | Remove? TBD | Center of Taos Plaza | NE corner of Plaza Center | Replace existing sign |
| 33 | Narrative | Remove? TBD | Center of Taos Plaza | NE corner of Plaza Center | Replace existing sign |

| | | | | | |
|----|-------------------|---|--|--|-----------------------------|
| 34 | Map | | Center of Taos Plaza | Eastern side of plaza near grass | Replace existing sign |
| 35 | Fingerboard Sign | Ledoux St, Bent St, John Dunn Shops, Kit Carson Rd, Museums, Public Restrooms | Center of Taos Plaza | | New sign |
| 36 | Narrative | Remove? TBD | Center of Taos Plaza | North-central of Plaza Center | Replace existing sign |
| 37 | Turn Sign | Left: Plaza Exit Ledoux St. Museums | Southbound South Plaza outlet | Corner of SW Plaza and US Bank | Replace existing sign |
| 38 | Decision Sign | Northbound straight: Taos Plaza Southbound left: Paseo del Pueblo Sur (US-68) Southbound right: Harwood Museum Martinez Hacienda Parking | "Northbound on South Plaza inlet Southbound on South Plaza outlet" | NE corner of Camino de la Placita and South Plaza outlet | New sign |
| 39 | Decision Sign | Right: Taos Plaza Left: Ledoux St Musuems Straight: Martinez Hacienda Parking | Westbound Camino de la Placita | SE corner of Camino de la Placita and South Plaza outlet | New sign |
| 40 | Monument Sign | Ledoux St: Museums, Galleries, Shops | Westbound Ledoux St | SW corner of Ledoux St and Camino de la Placita | New sign in existing frame |
| 41 | Narrative | TBD | Westbound Ledoux St | SW corner of Ledoux St and Camino de la Placita | Replace existing sign |
| 42 | Decision Sign | Right: Ledoux St Musuems Left: Taos Plaza | Two-sided: east and westbound | NW corner of Camino de la Placita and Ledoux St | New sign |
| 43 | Confirmation Sign | Straight: Historic Downtown | Eastbound Ranchitos Rd | SE corner of Ranchitos Rd and Salazar Rd | New sign |
| 44 | Gateway Sign | Taos Historic District | Eastbound Ranchitos Rd | NE corner of Salazar Rd and Ranchitos Rd | New sign in existing frame |
| 45 | Confirmation Sign | Straight: Fred Baca Park Rio Fernando Park Martinez Hacienda | Westbound Ranchitos Rd | NE corner of Ranchitos Rd and Salazar Rd | New sign |
| 46 | Narrative | TBD | La Loma Plaza - Valdez Ln | SE corner of La Loma Plaza | Replace existing sign |
| 47 | Decision Sign | Right: Paseo del Pueblo Sur (US-68) Left: Taos Plaza - Historic Downtown Shopping Municipal Buildings and Library Parking | Eastbound Ranchitos Rd | SW corner of Ranchitos Rd and Camino de la Placita | New sign, existing DOT pole |
| 48 | Decision Sign | Left: Harwood Museum Martinez Hacienda Straight: Parking Taos Plaza - Historic Downtown Shopping | Northbound Camino de la Placita | SE corner of Camino de la Placita and Ranchitos Rd | Replace existing sign |
| 49 | Decision Sign | Right: Harwood Museum of Art Martinez Hacienda Straight: Paseo del Pueblo Sur (US-68) | Southbound Camino de la Placita | NW corner of Camino de la Placita and Ranchitos Rd | Replace existing sign |

| | | | | | |
|----|------------------|--|---|--|-----------------------|
| 50 | Turn Sign | Taos Plaza | East and westbound | SE corner of Camino de la Placita and West Plaza inlet - one sign on existing light pole next to bank, one on side of building where Taos Leather is | New sign |
| 51 | Narrative | TBD | Northbound Camino de la Placita | SW corner of Camino de la Placita and SW Plaza inlet, in Dona Luz parking lot | Replace existing sign |
| 52 | Map | | Southbound Camino de la Placita | East side of Dona Luz Parking Lot | Replace existing sign |
| 53 | Turn Sign | Right: Public Restrooms | On building | NW corner of Teresina Ln and North Plaza | Replace existing sign |
| 54 | Decision Sign | Right: Taos Plaza via Teresina Ln Left: Taos Plaza via Juan Largo Ln | Facing south on Scheurich Ln | Backside of Old County Courthouse | New sign |
| 55 | Fingerboard Sign | Bent St, John Dunn Shops, Taos Plaza, Public Restrooms, Parking | Intersection of Juan Largo and Scheurich Ln | | New sign |
| 56 | Decision Sign | Right: Taos Plaza Left: Bent St | Facing east in Bent St Parking Lot | Entrance to John Dunn Shops from parking lot | New sign |
| 57 | Map | | Bent St Parking Lot | | Replace existing sign |
| 58 | Decision Sign | Right (northbound, reverse for southbound): Parking Bent Street John Dunn Shops Taos Plaza Left: Parking Bus Stop RV Parking | Two-sided: north and southbound | East side of Camino de la Placita and Bent St Parking lot | Replace existing sign |
| 59 | Fingerboard Sign | Museums, Taos Plaza, John Dunn Shops, Bent St, Municipal Buildings, Parking Lots | | SW corner of Camino de la Placita and Loretto Park | New sign |
| 60 | Turn Sign | Parking and RV and Bus icon | Two-sided: north and southbound | NW corner of Camino de la Placita and Loretto Park | Replace existing sign |
| 61 | Map | | Westbound Loretto Park | In Guadalupe Parking Lot | Replace existing sign |
| 62 | Decision Sign | Right: Municipal Buildings Kit Carson Park Straight: Town Hall Public Library Parking | Northbound Camino de la Placita | SE corner of Camino de la Placita and Civic Plaza Dr | Replace existing sign |
| 63 | Decision Sign | Right: Town Hall Public Library Parking Left: Historic Downtown Parking | Westbound Civic Plaza Dr | West dead end of Camino de la Placita and Civic Plaza Dr | Replace existing sign |
| 64 | Map | | Westbound Civic Plaza Dr | UNM-Taos and Civic Plaza Dr | New sign |
| 65 | Decision Sign | Left: Bataan Hall Municipal Buildings Kit Carson Park Straight: Historic Downtown Parking | Southbound Camino de la Placita | NW corner of Camino de la Placita and Civic Plaza Dr | New Sign |
| 66 | Decision Sign | Right: Town Hall Public Library Parking | Southbound Camino de la Placita | NW corner of Camino de la Placita and Town Hall Dr | Replace existing sign |
| 67 | Narrative | | Center of Taos Plaza | NE corner of Plaza Center | Replace existing sign |
| 68 | Narrative | | Center of Taos Plaza | North-central of Plaza Center | Replace existing sign |
| 69 | Narrative | | La Loma Plaza - Valdez Ln | SE corner of La Loma Plaza | Replace existing sign |

TAOS WAYFINDING PLAN

WINTER 2023

